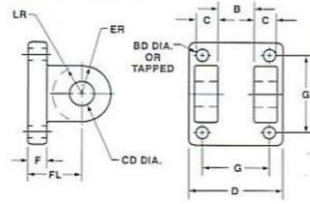


**PNEUMATIC CYLINDER ACCESSORIES A-81/MP2.. SERIES**

**Detachable Mounts**

Material: Casting steel  
Finish: Black Oxide

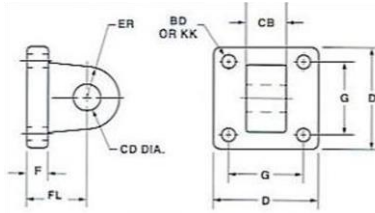


Part NO.	Dimensions(Inch)									Reference P/N
	CD	FL	F	B	C	D	ER	G	TAPPED	
<b>A-81-15</b>	0.502	1.125	0.375	0.760	0.500	2.000	0.625	1.430	1/4-28	BMP2-15
<b>A-81-15-D</b>	0.502	1.125	0.375	0.760	0.500	2.000	0.625	1.430	0.281	BMP2-15D
<b>A-81-20</b>	0.502	1.125	0.375	0.760	0.500	2.500	0.625	1.840	5/16-24	BMP2-2
<b>A-81-20-D</b>	0.502	1.125	0.375	0.760	0.500	2.500	0.625	1.840	0.344	BMP2-2D
<b>A-81-25</b>	0.502	1.125	0.375	0.760	0.500	3.000	0.625	2.190	5/16-24	BMP2-25
<b>A-81-25-D</b>	0.502	1.125	0.375	0.760	0.500	3.000	0.625	2.190	0.344	BMP2-25D
<b>A-81-32</b>	0.752	1.875	0.625	1.255	0.625	3.750	0.875	2.765	3/8-24	BMP2-32
<b>A-81-32-D</b>	0.752	1.875	0.625	1.255	0.625	3.750	0.875	2.765	0.406	BMP2-32D
<b>A-81-40</b>	0.752	1.875	0.625	1.255	0.625	4.500	0.875	3.320	3/8-24	BMP2-4
<b>A-81-40-D</b>	0.752	1.875	0.625	1.255	0.625	4.500	0.875	3.320	0.406	BMP2-4D
<b>A-81-50</b>	0.752	1.875	0.625	1.255	0.625	5.500	0.875	4.100	1/2-20	BMP2-5
<b>A-81-50-D</b>	0.752	1.875	0.625	1.255	0.625	5.500	0.875	4.100	0.531	BMP2-5D
<b>A-81-60</b>	1.002	2.250	0.750	1.515	0.750	6.500	1.125	4.880	1/2-20	BMP2-6
<b>A-81-60-D</b>	1.002	2.250	0.750	1.515	0.750	6.500	1.125	4.880	0.531	BMP2-6D

Notes: Parts with suffix D are through holes without thread.

**Detachable Mounts**

Material: Casting steel  
Finish: Black Oxide



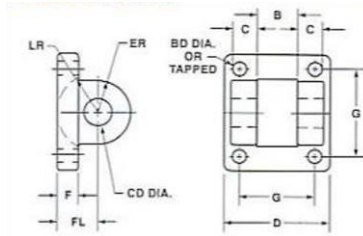
Part NO.	Dimensions(Inch)								Reference P/N
	CD	FL	F	CB	D	ER	G	KK TAPPED	
<b>A-83-15</b>	0.502	1.125	0.375	0.750	2.000	0.625	1.430	1/4-28	BMP4-15
<b>A-83-15-D</b>	0.502	1.125	0.375	0.750	2.000	0.625	1.430	0.281	BMP4-15D
<b>A-83-20</b>	0.502	1.125	0.375	0.750	2.500	0.625	1.840	5/16-24	BMP4-2
<b>A-83-20-D</b>	0.502	1.125	0.375	0.750	2.500	0.625	1.840	0.344	BMP4-2D
<b>A-83-25</b>	0.502	1.125	0.375	0.750	3.000	0.625	2.190	5/16-24	BMP4-25
<b>A-83-25-D</b>	0.502	1.125	0.375	0.750	3.000	0.625	2.190	0.344	BMP4-25D
<b>A-83-32</b>	0.752	1.875	0.625	1.250	3.750	0.875	2.760	3/8-24	BMP4-32
<b>A-83-32-D</b>	0.752	1.875	0.625	1.250	3.750	0.875	2.760	0.406	BMP4-32D
<b>A-83-40</b>	0.752	1.875	0.625	1.250	4.500	0.875	3.320	3/8-24	BMP4-4
<b>A-83-40-D</b>	0.752	1.875	0.625	1.250	4.500	0.875	3.320	0.406	BMP4-4D

Notes: Parts with suffix D are through holes without thread.

**PNEUMATIC CYLINDER ACCESSORIES A-85/MP1.. SERIES**

**Detachable Mounts**

Material: Casting steel  
Finish: Black Oxide



Part NO.	Dimensions(Inch)										Reference P/N
	CD	FL	F	B	C	D	ER	G	LR	TAPPED	
<b>A-85-15</b>	0.502	0.750	0.375	0.760	0.500	2.000	0.625	1.430	0.750	1/4-28	BMP1-15
<b>A-85-15-D</b>	0.502	0.750	0.375	0.760	0.500	2.000	0.625	1.430	0.750	0.281	BMP1-15D
<b>A-85-20</b>	0.502	0.750	0.375	0.760	0.500	2.500	0.625	1.840	0.750	5/16-24	BMP1-2
<b>A-85-20-D</b>	0.502	0.750	0.375	0.760	0.500	2.500	0.625	1.840	0.750	0.344	BMP1-2D
<b>A-85-25</b>	0.502	0.750	0.375	0.760	0.500	3.000	0.625	2.190	0.750	5/16-24	BMP1-25
<b>A-85-25-D</b>	0.502	0.750	0.375	0.760	0.500	3.000	0.625	2.190	0.750	0.344	BMP1-25D
<b>A-85-32</b>	0.752	1.250	0.625	1.262	0.625	3.750	0.875	2.765	1.250	3/8-24	BMP1-32
<b>A-85-32-D</b>	0.752	1.250	0.625	1.262	0.625	3.750	0.875	2.765	1.250	0.406	BMP1-32D
<b>A-85-40</b>	0.752	1.250	0.625	1.262	0.625	4.500	0.875	3.320	1.250	3/8-24	BMP1-4
<b>A-85-40-D</b>	0.752	1.250	0.625	1.262	0.625	4.500	0.875	3.320	1.250	0.406	BMP1-4D
<b>A-85-50</b>	0.752	1.250	0.625	1.262	0.625	5.500	0.875	4.100	1.250	1/2-20	BMP1-5
<b>A-85-50-D</b>	0.752	1.250	0.625	1.262	0.625	5.500	0.875	4.100	1.250	0.531	BMP1-5D
<b>A-85-60</b>	1.002	1.500	0.750	1.515	0.750	6.500	1.25	4.880	1.500	1/2-20	BMP1-6
<b>A-85-60-D</b>	1.002	2.250	0.750	1.515	0.750	6.500	1.125	4.880	1.500	0.531	BMP1-6D

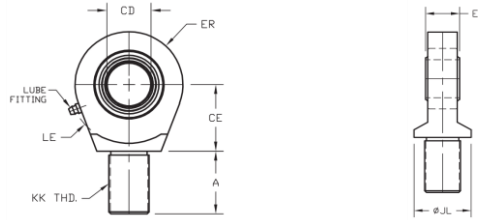
Notes: Parts with suffix D are through holes without thread.

**PNEUMATIC CYLINDER ACCESSORIES HH-MSRE.. SERIES**

**Spherical Rod Eye**

Housing: 1045# forging steel

Finish: Black Oxide



Part NO.	Dimensions(Inch)									MAX LOAD (TENSION) lbs.
	Bore Reference	A	CD (DIA.)	CE	ER	EX	JL	KK	LE	
HH-MSRE-500	1.500	0.688	0.500	0.875	0.875	0.437	0.875	7/16-20	0.750	2600
HH-MSRE-750	2.000	1.000	0.750	1.250	1.250	0.656	1.313	3/4-16	1.063	9400
HH-MSRE-1000	3.250	1.500	1.000	1.875	1.375	0.875	1.500	1-14	1.438	16800
HH-MSRE-1375	4.000	2.000	1.375	2.125	1.813	1.188	2.000	1 1/4-12	1.875	28500
HH-MSRE-1750	5.000	2.125	1.750	2.500	2.188	1.531	2.250	1 1/2-12	2.125	43000
HH-MSRE-2000	6.000	2.875	2.000	2.750	2.625	1.750	2.750	1 7/8-12	2.500	70200

**PNEUMATIC CYLINDER ACCESSORIES CP SERIES**

**Pivot Pin(not includes Cotter Pins)**

Material: 42CrMo

Finish: Chrome plated



Part NO.	Dimensions(Inch)			MAX LOAD (TENSION) lbs.
	CD	LP	LH	
CP500C	0.500	1.970	2.280	5800
CP750C	0.750	2.750	3.090	13250
CP1000C	1.000	3.250	3.590	23500
CP1375C	1.375	4.282	4.656	44500
CP1750C	1.750	5.532	6.031	72000
CP2000C	2.000	5.532	6.031	94000
CP2500C	2.500	6.310	6.780	145000
CP3000C	3.000	6.350	6.840	210000
CP3500C	3.500	8.410	8.970	285000
CP4000C	4.000	9.410	9.970	375000

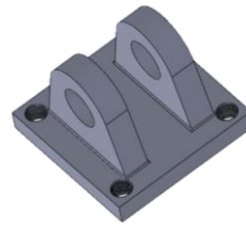
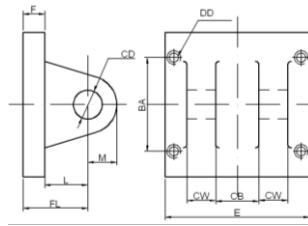
Part NO.	Dimensions(Inch)			MAX LOAD (TENSION) lbs.
	CD	LP	LH	
CP500E	0.500	1.875	2.109	5800
CP750E	0.750	2.625	2.901	13250
CP1000E	1.000	3.141	3.390	23500
CP1375E	1.375	4.156	4.470	44500
CP1750E	1.750	5.156	5.560	72000
CP2000E	2.000	5.188	5.560	94000
CP2500E	2.500	6.188	6.630	145000
CP3000E	3.000	6.250	6.780	210000
CP3500E	3.500	8.188	8.850	285000
CP4000E	4.000	9.188	9.860	375000

**PNEUMATIC CYLINDER ACCESSORIES CB.. SERIES**

**■ Clevis Bracket**

Material: Casting steel

Finish: Black Oxide



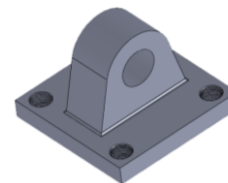
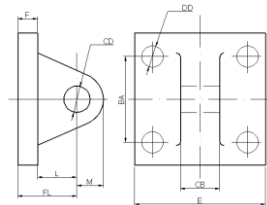
Part NO.	Dimensions(Inch)										MAX LOAD (TENSION) lbs.
	BA	CB	CD (DIA.)	CW	DD UNF-2B	E	F	FL	L	M	
<b>CB 500</b>	1.625	0.750	0.500	0.500	3/8-24	2.500	0.375	1.125	0.750	0.500	9733
<b>CB 750</b>	2.563	1.250	0.750	0.625	1/2-20	3.500	0.625	1.875	1.250	0.750	18667
<b>CB 1000</b>	3.250	1.500	1.000	0.750	5/8-18	4.500	0.750	2.250	1.500	1.000	25600
<b>CB 1375</b>	3.813	2.000	1.375	1.000	5/8-18	5.000	0.875	3.000	2.125	1.375	49200
<b>CB 1750</b>	4.938	2.500	1.750	1.250	7/8-14	6.500	0.875	3.125	2.250	1.750	45333
<b>CB 2000</b>	5.750	2.500	2.000	1.250	1-14	7.500	1.000	3.500	2.500	2.000	44000
<b>CB 2500</b>	6.594	3.000	2.500	1.500	1 1/8-12	8.500	1.000	4.000	3.000	2.500	46533
<b>CB 3000</b>	7.500	3.000	3.000	1.500	1 1/4-12	9.500	1.000	4.250	3.250	2.750	45067
<b>CB 3500</b>	9.625	4.000	3.500	2.000	1 3/4-12	12.625	1.688	5.688	4.000	3.500	111333
<b>CB4000</b>	11.500	4.500	4.000	2.250	2 - 12	14.875	1.840	6.440	4.500	4.000	136800

**PNEUMATIC CYLINDER ACCESSORIES EB.. SERIES**

**■ Eye Bracket**

Material: Casting steel

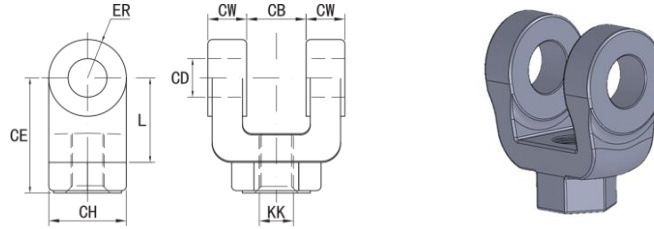
Finish: Black Oxide



Part NO.	Dimensions(Inch)									MAX LOAD (TENSION) lbs.
	BA	CB	CD (DIA.)	DD	E	F	FL	L	M	
<b>EB 500</b>	1.625	0.750	0.500	0.406	2.500	0.375	1.125	0.750	0.500	5467
<b>EB 750</b>	2.563	1.250	0.750	0.531	3.500	0.625	1.875	1.250	0.750	14000
<b>EB 1000</b>	3.250	1.500	1.000	0.656	4.500	0.750	2.250	1.500	1.000	27200
<b>EB 1375</b>	3.813	2.000	1.375	0.656	5.000	0.875	3.000	2.125	1.375	28267
<b>EB 1750</b>	4.938	2.500	1.750	0.906	6.500	0.875	3.125	2.250	1.750	65973
<b>EB 2000</b>	5.750	2.500	2.000	1.063	7.500	1.000	3.500	2.500	2.000	93333
<b>EB 2500</b>	6.594	3.000	2.500	1.188	8.500	1.000	4.000	3.000	2.500	125600
<b>EB 3000</b>	7.500	3.000	3.000	1.313	9.500	1.000	4.250	3.250	2.750	162533
<b>EB 3500</b>	9.625	4.000	3.500	1.813	12.625	1.688	5.688	4.000	3.500	76533
<b>EB 4000</b>	11.500	4.500	4.000	2.063	14.875	1.938	6.480	4.500	4.000	100000

**PNEUMATIC CYLINDER ACCESSORIES RC.. SERIES**

**■ Rod Clevis**

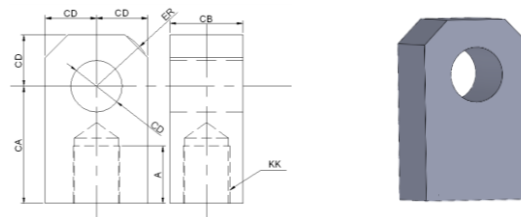


Material:1045# forging steel  
Finish: Black Oxide

Part NO.	Dimensions(Inch)								MAX LOAD (TENSION) lbs.
	CB	CD (DIA.)	CE	CH	CW	ER (RADIUS)	KK UNF-2B	L	
RC 437	0.750	0.500	1.500	1.000	0.500	0.500	7/16-20	0.750	5667
RC 500	0.750	0.500	1.500	1.000	0.500	0.500	1/2-20	0.750	5667
RC 625	0.750	0.500	1.500	1.000	0.500	0.500	5/8 - 18	0.750	5667
RC 750	1.250	0.750	2.375	1.250	0.625	0.750	3/4-16	1.250	14933
RC 875	1.250	0.750	2.375	1.250	0.625	0.750	7/8-14	1.250	14933
RC 1000	1.500	1.000	3.125	1.500	0.750	1.000	1-14	1.500	26000
RC 1250	2.000	1.375	4.125	2.000	1.000	1.375	1 1/4-12	2.125	44667
RC 1375	2.000	1.375	4.125	2.000	1.000	1.375	1 3/8-12	2.125	44667
RC 1500	2.500	1.750	4.500	2.375	1.250	1.750	1 1/2-12	2.250	60800
RC 1750	2.500	1.750	4.500	2.375	1.250	1.750	1 3/4-12	2.250	60800
RC 1875	2.500	2.000	5.500	3.000	1.250	2.000	1 7/8-12	2.500	87467
RC 2250	3.031	2.500	6.500	3.500	1.500	2.500	2 1/4-12	3.000	130933
RC 2500	3.031	3.000	6.750	3.875	1.500	2.750	2 1/2-12	3.250	130933
RC 3250	4.031	3.500	8.500	5.000	2.000	3.500	3 1/4-12	4.000	208933
RC 4000	4.531	4.000	10.000	6.125	2.250	4.000	4-12	4.500	294933

**PNEUMATIC CYLINDER ACCESSORIES RE.. SERIES**

**■ Rod Eye**



Material:1018 CRS  
Finish: Black Oxide

Part NO.	Dimensions(Inch)						MAX LOAD (TENSION) lbs.
	A	CA	CB	CD	ER	KK UNF-2B	
RE 437	0.750	1.500	0.750	0.500	0.625	7/16-20	6630
RE 500	0.750	1.500	0.750	0.500	0.625	1/2-20	7530
RE 750	1.125	2.063	1.250	0.750	0.875	3/4-16	18880
RE 875	1.125	2.063	1.250	0.750	0.875	7/8-14	18880
RE 1000	1.625	2.813	1.500	1.000	1.888	1-14	30340
RE 1250	2.000	3.438	2.000	1.375	1.563	1 1/4-12	55060
RE 1500	2.250	4.000	2.500	1.750	2.000	1 1/2-12	87640
RE 1875	3.000	5.000	2.500	2.000	2.500	1 7/8-12	101120
RE 2250	3.500	5.812	3.000	2.500	2.813	2 1/4-12	150560
RE 2500	3.500	6.125	3.000	3.000	3.250	2 1/2-12	182020
RE 3250	4.500	7.625	4.000	3.500	3.875	3 1/4-12	280900
RE 3500	5.000	7.625	4.000	3.500	3.875	3 1/2-12	280900
RE 4000	5.500	9.125	4.500	4.000	4.438	4-12	364040